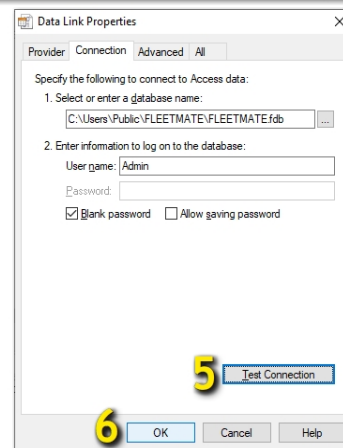
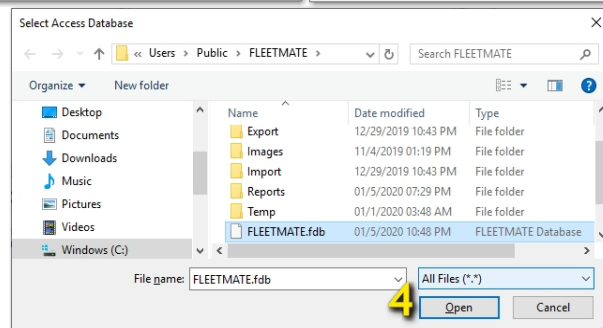
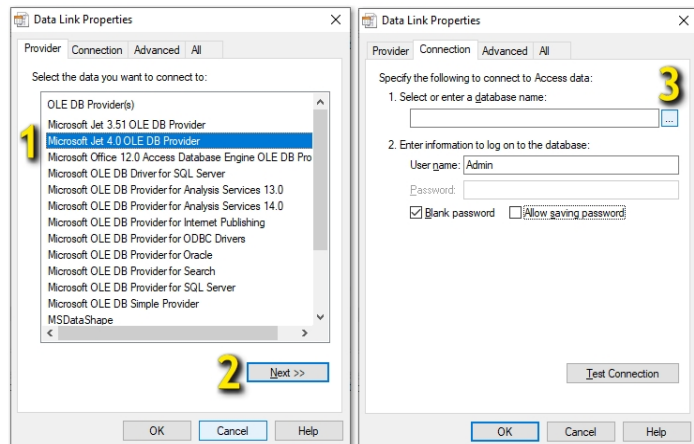


CUSTOMER GUIDE: Opening a FLEETMATE Database

Opening a FLEETMATE Standard JET Database

To open a FLEETMATE JET database, click **File | Database | Open...** in FLEETMATE and follow the steps below.

1. Select **“Microsoft Jet 4.0 OLE DB”** as your provider.
2. Click [**Next >>**]
3. Click the browse [...] button to navigate your Windows file system.
4. Change the file type to **“All Files (*.*)”**, then double-click on your FLEETMATE FDB database file.
5. Click **Test Connection**.
6. Click [**OK**] to open your FLEETMATE database.



CUSTOMER GUIDE: Opening a FLEETMATE Database

Opening a FLEETMATE SQL Server Database

To open a FLEETMATE SQL Server database, click **File | Database | Open...** in FLEETMATE and follow the steps below.

1. Use “**Microsoft OLE DB Driver for SQL Server**” if available. If it is not listed, choose “**Microsoft OLE DB Provider for SQL Server**”.
2. Click [**Next >>**]
3. Select your SQL Server. If necessary, click [**Refresh**] to refresh the list. Your IT department may require you to manually enter the server name or IP address. You may need to contact your IT staff for additional information.
4. Using **Integrated Security** is always recommended. If you must use a specific SQL Server Login in your environment, do not use the Native Client v11 for SQL Server provider.
5. Select your Database from the list.
6. Click **Test Connection** to ensure that the connection succeeds.
7. Click [**OK**] to open your FLEETMATE SQL Server database.

