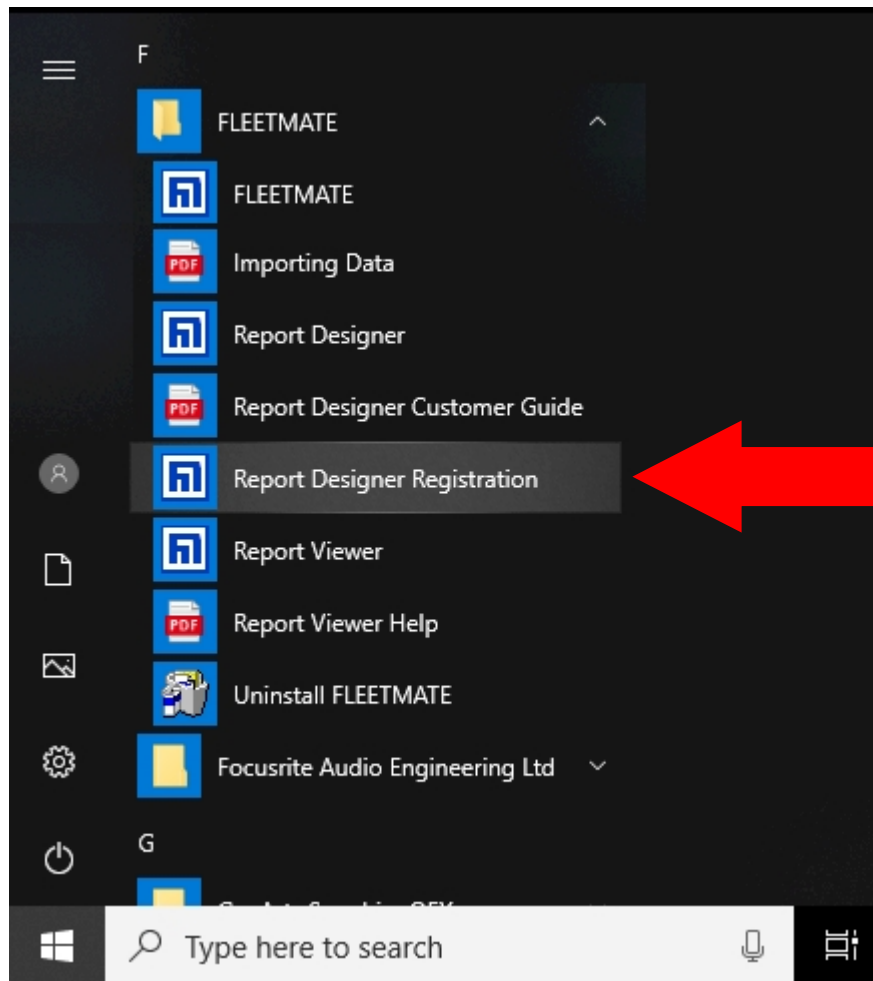


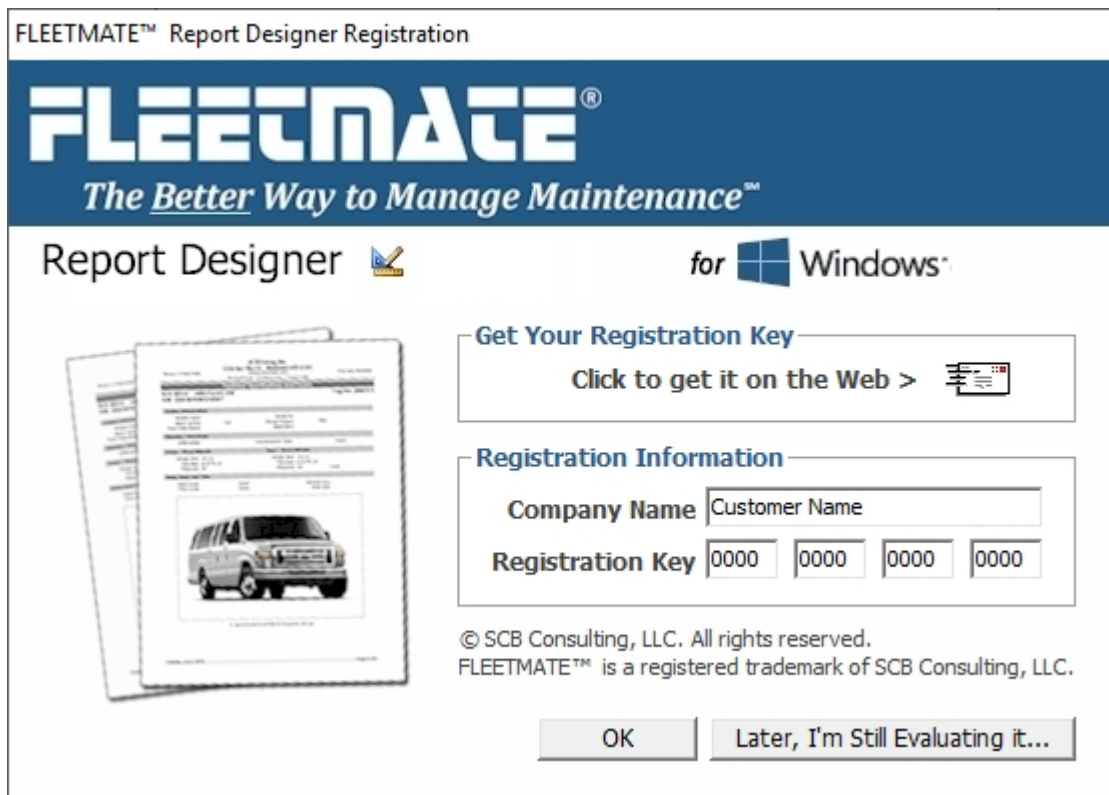
### Registration

Once FLEETMATE® Report Designer is installed on your PC, you will need to use the FLEETMATE Report Designer Registration shortcut under the FLEETMATE program group to license it.



### Registration

Once the registration window appears, enter your Company Name and Registration Key in the fields provided. Click the OK button to activate the license.



Once you click OK, FLEETMATE Report Designer will be fully functional.