

CUSTOMER GUIDE: Barcode Features

Overview

FLEETMATE provides support for a variety of barcode symbologies. The box to the left provides a list of barcode symbol sets that are supported within the FLEETMATE software. You do not need to use bar-coding in order to use FLEETMATE. This is an optional feature.

If you have barcode technology already in-use at your business, chances are that FLEETMATE will be able to accommodate your existing barcode type, and your specific scanning definitions.

If you have not used bar-coding in the past and want to begin using this technology, you will need to research the various symbologies to determine which one will best fit your business needs. Some barcodes are designed for numeric (**0-9**) values only (i.e. Codabar). Some can support alphanumeric (**A-Z** and **0-9**) characters, while others support additional characters in a full character set. Some are also optimized for, or limited to, values of a certain length of characters. We recommend that you adequately research the topic to make the best choice for your business.

2 of 5
Interleaved 2 of 5
Code 39
Codabar
Code 39 Extended
Code 128A
Code 128B
Code 128C
UPC-A
MSI (Plessey)
Code 93
Code 93 Extended
EAN-13
EAN-8
PostNet
ANSI 39
ANSI 39X
Code 128 Auto
UCC EAN-8
UPC-E

Barcode Scanners

FLEETMATE does not require a specific type of barcode scanner. You can use handheld trigger-type devices, wands, and stationary scanners. We do recommend **USB** type scanners, as those are usually the easiest to hook-up and use. You may need to set FLEETMATE to use your **Start** and **Stop** characters if you are using unique values. Usually standard default settings will require no special adjustment. The scanner must immediately transmit the scanned code, rather than store it.

Barcode Fonts

FLEETMATE does not include barcode **fonts**. If you want to print barcode labels for your stock parts, storage bins, etc., you will need to purchase those fonts separately. There are reports included in FLEETMATE that are designed to accommodate printing barcodes, but you must have the fonts installed on your PC in order for the barcodes to print.

In terms of font selection and point settings, we recommend a **Small** or **Medium Height** font that provides **human-readable** values, and a maximum point size of **eight to ten (8-10)** points.

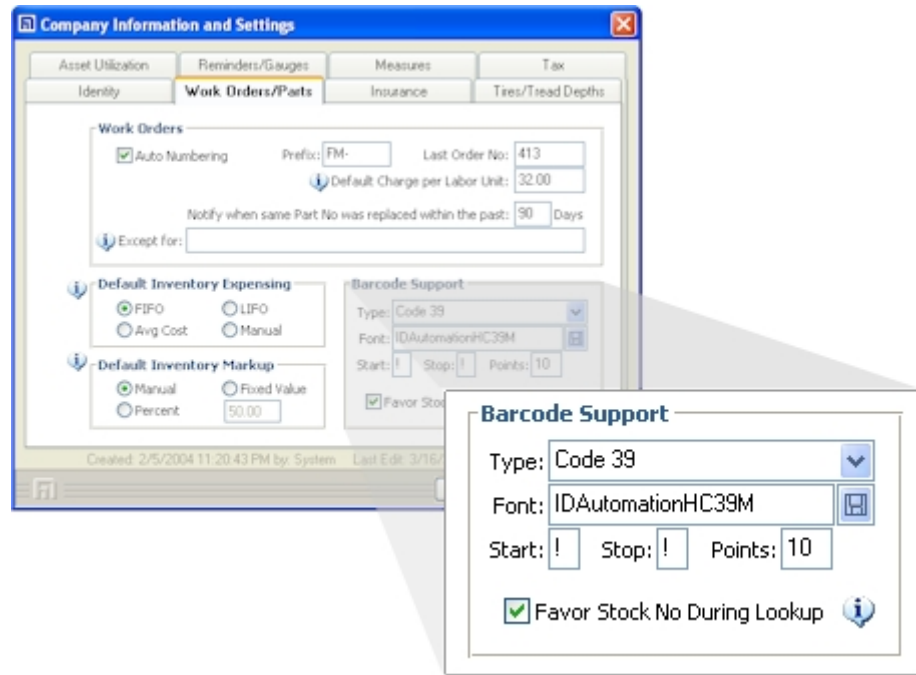
These settings will work well with most scanners, as well as the reports in FLEETMATE that are designed to support barcodes. The barcode pictured is a **Code 39, human-readable, Medium Height** font at **10 points**. The human-readable feature is convenient since it displays the actual value "ABCDEF123456" that the barcode represents.



CUSTOMER GUIDE: Barcode Features

Barcode Set Up

There are several values that you will need to define in order to use the barcode features in FLEETMATE. To setup these values access the **Company Data | Customer Information and Settings...** menu option from the main window.



Barcode Settings on the Work Orders/Parts Tab

On this dialog, click the **Work Orders/Parts** tab to define these settings.

- Type – the **Type** of barcode symbology you are using
- Font – The **Font Name** you want to use that is installed on your PC
- Start – the **Start** character indicating the beginning of a bar-coded value
- Stop – the **Stop** character indicating the end of a bar-coded value
- Points – the **Point Size** to use when printing bar-coded reports/labels

CUSTOMER GUIDE: Barcode Features

More About Barcode Font Sizes

Many barcode font suppliers will offer the same type (e.g. Code 39, Code 128, etc.) of barcode font in several different sizes governing the basic height of the barcode.

Below are some examples of Code 39 fonts from IDAutomation® to illustrate how these fonts are named and what the names mean. Note that the **Point Size** for all of the barcodes pictured is set to **10 points**. The only difference is in the font name and height selected.

-  IDAutomationHC39**XS** **Extra Small** **OK**
* 1 2 3 4 A B C D *
-  IDAutomationHC39**S** **Small** **GOOD**
* 1 2 3 4 A B C D *
-  IDAutomationHC39**M** **Medium** **GOOD**
* 1 2 3 4 A B C D *
-  IDAutomationHC39**L** **Large** **Too High**
* 1 2 3 4 A B C D *
-  IDAutomationHC39**XL** **Extra Large** **Too High**
* 1 2 3 4 A B C D *

Note how the letter designations (XS, S, M, L, XL) in the font name determine the basic size of the barcode in terms of height. A **small** or **medium** size is recommended for use with FLEETMATE. If you select a barcode font that is too large in terms of height, your barcodes will not appear properly on your reports.